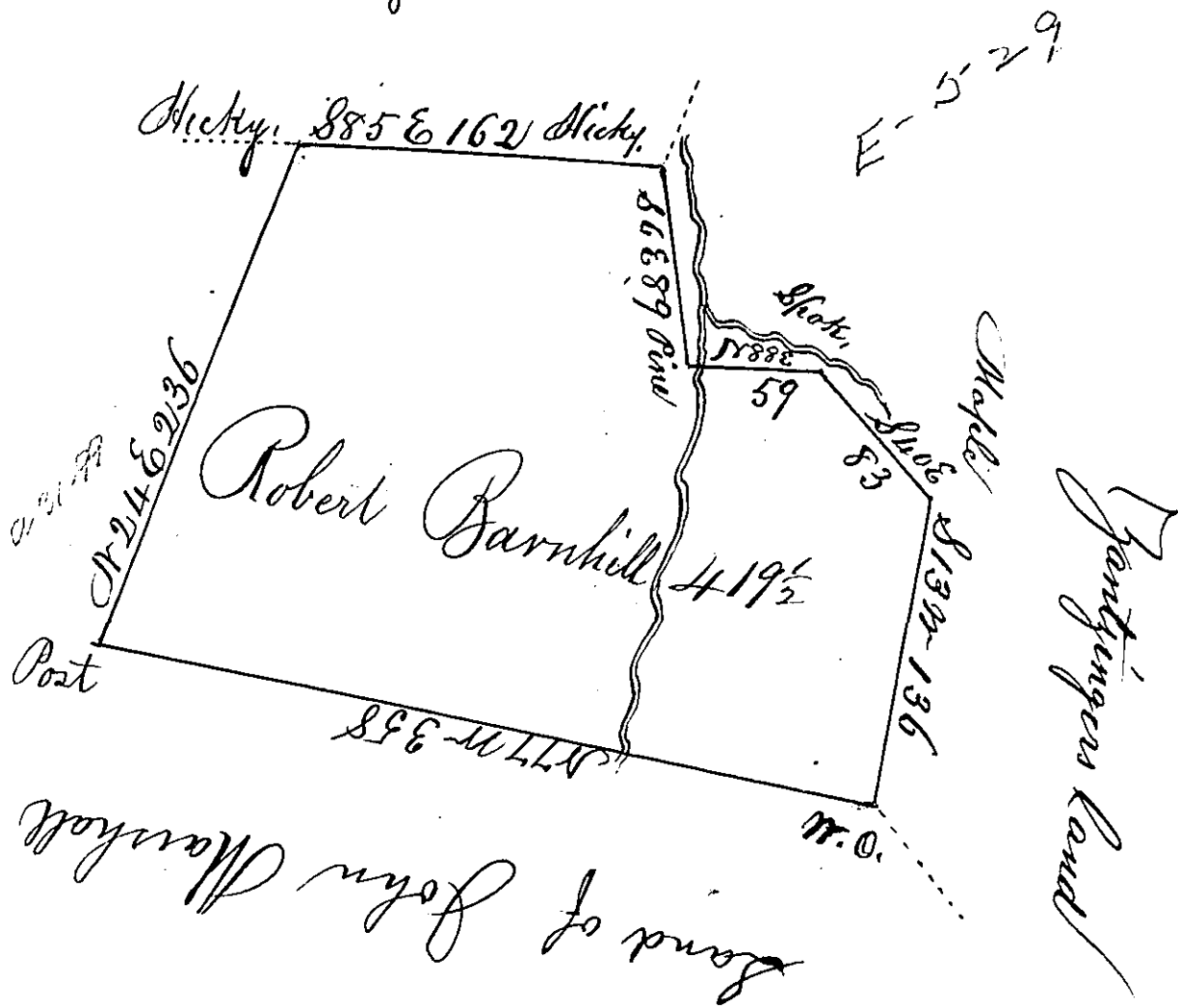


Blaine & Miller



A Draught of a tract of land situate on Clearfield
 Creek in Bedford County, containing four hundred &
 nineteen acres & an half & the usual allowance of six per
 cent for roads &c. Surveyed for Robert Barnhill
 Clerk the 7th 1785 in Pursuance of a warrant dated April
 21st 1785.

John Lukens Esqr.
 Sur. Genl.

George Woods D. S.

IN TESTIMONY that the above is a copy of the original remaining on file in the
 Department of Internal Affairs of Pennsylvania, made con-
 formably to an Act of Assembly approved the 16th day of
 February, 1833, I have hereunto set my Hand and caused
 the Seal of said Department to be affixed at Harrisburg, this

Sixth day of February 1834.

J. Simpson Africa,
 Secretary of Internal Affairs